

CoolDry field test result



19.7.2010 / 14.7.2010 in Ludwigsburg, South Germany

Outside temperature peak 36 °C, sunny, light breeze

Changing temp readings / partly inconsistent data due to clouds, breeze

Concrete plates 40 x 40 cm, 6 cm strong, light grey

www.cooldry.eu

Object	10.00	12.00	13.00	17.00	18.00	20.00	21.30
1) Concrete with Membrane and CoolDry	26,8	32,9	35,1	35,9	33,8	28,3	23,6
2) Concrete with Membrane	41,4	57,3	56,8	53,4	55,2	40,7	27,4
Difference	14,6	24,4	21,7	17,5	21,4	12,4	3,8
3) Back of 1)	22,0	33,7	34,4	33,9	34,1	30,5	25,2
4) Back of 2)	34,3	51,1	52,1	46,9	51,5	44,8	30,5
Difference	12,3	17,4	17,7	13,0	17,4	14,3	5,3
5) Concrete with CoolDry	21,5	34,1	35,7	38,1	38,5	27,7	23,3
6) Concrete	27,3	51,8	51,2	54,8	55,2	33,0	25,6
Difference	5,8	17,7	15,5	16,7	16,7	5,3	2,3

Note: due to partly cloudy conditions on both days we have used the 13.00 readings from 14.7. peak outside temp was a little lower on 14.7. the test was carried out by turning all sample plates with the sun in order to show the maximum solar heat pickup during the day

Chart A: Concrete with Membrane

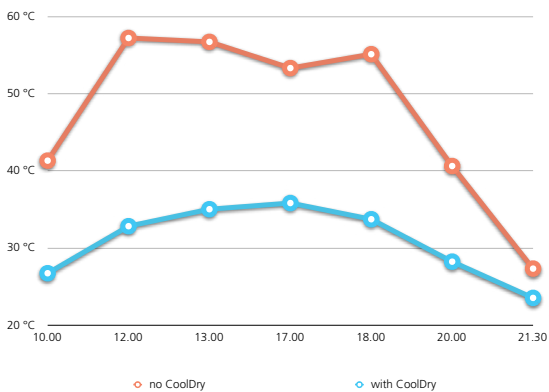


Chart B: Back of Concrete with Membrane

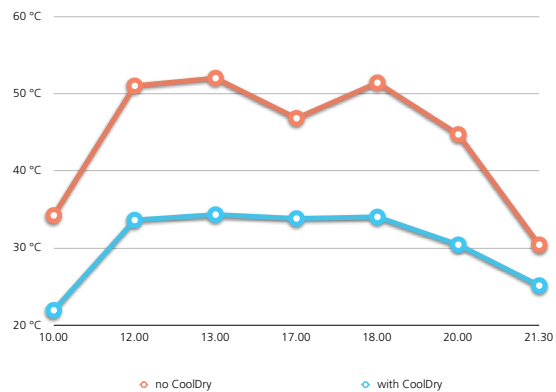


Chart C: Concrete (bare)

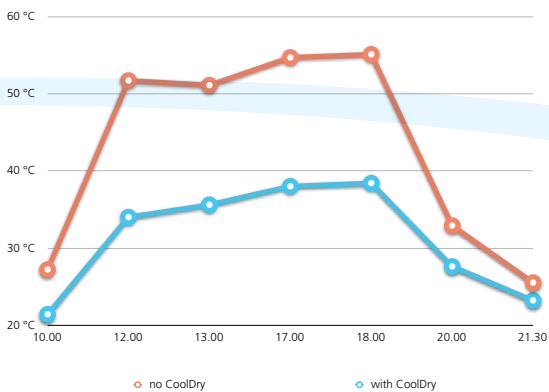
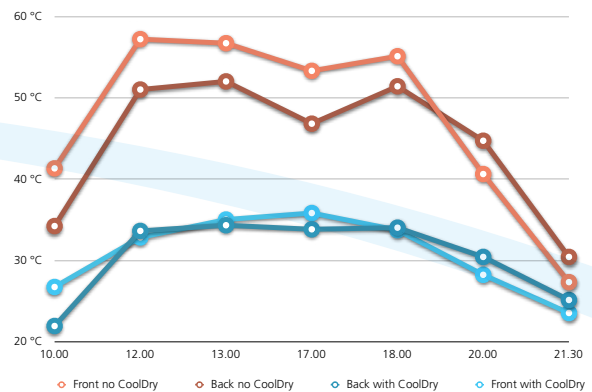


Chart D: Comparison Front/Back



The back of the untreated plate is nearly as hot as the front – powerful heating system! Even at 21.30 it is still above 30 °C.

Interesting: the back of the concrete is cooler than the front for quite some time

CoolDry field test result



19.7.2010 / 14.7.2010 in Ludwigsburg, South Germany

Outside temperature peak 36 °C, sunny, light breeze

Changing temp readings / partly inconsistent data due to clouds, breeze

Concrete plates 40 x 40 cm, 6 cm strong, light grey

www.cooldry.eu

- 1) Concrete with membrane and CoolDry
- 2) Concrete with membrane
- 3) Back of 1)
- 4) Back of 2)
- 5) Concrete with CoolDry
- 6) Concrete (bare)

Time	1) Concrete with membrane and CoolDry	2) Concrete with membrane	3) Back of 1)	4) Back of 2)	5) Concrete with CoolDry	6) Concrete (bare)
10.00	26.8	4.4	22.0	34.3	27.5	27.7
12.00	32.9	5.7	33.1	5.1	34.1	5.4
13.00	35.1	5.6	34.4	5.2	35.7	5.2
17.00	35.9	5.3	33.5	4.5	38.1	5.4
18.00	33.8	5.5	34.1	4.5	38.5	5.6
20.00	28.3	4.7	30.5	4.4	27.7	3.3
21.30	23.6	2.4	25.2	3.0	23.3	2.5